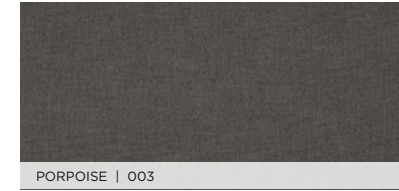




MANNER | 466177 (GRADE 4)



PORPOISE | 003

MANNER | 466177 (GRADE 4)



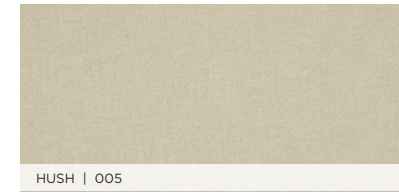
THICKET | 007

MANNER | 466177 (GRADE 4)



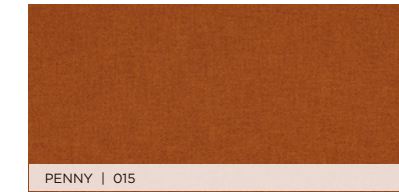
BASIN | 026

MANNER | 466177 (GRADE 4)



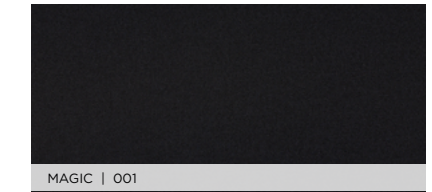
HUSH | 005

MANNER | 466177 (GRADE 4)



PENNY | 015

MANNER | 466177 (GRADE 4)



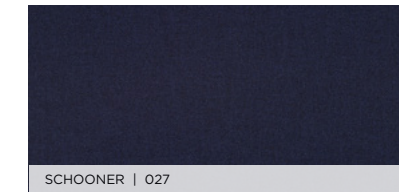
MAGIC | 001

MANNER | 466177 (GRADE 4)



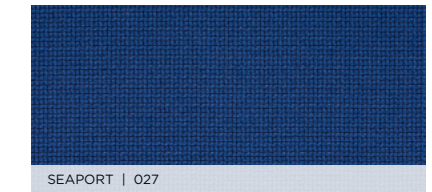
COCOA | 008

MANNER | 466177 (GRADE 4)



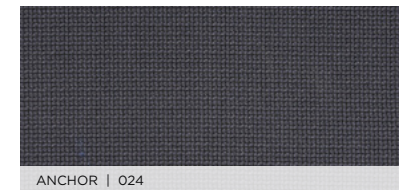
SCHOONER | 027

METRIC | 466014 (GRADE 4)



SEAPORT | 027

METRIC | 466014 (GRADE 4)



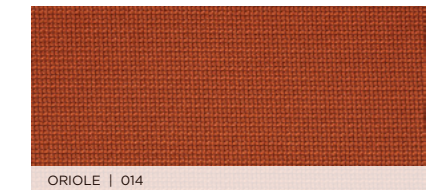
ANCHOR | 024

METRIC | 466014 (GRADE 4)



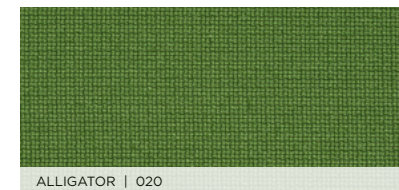
CARDINAL | 012

METRIC | 466014 (GRADE 4)



ORIOLE | 014

METRIC | 466014 (GRADE 4)



ALLIGATOR | 020

METRIC | 466014 (GRADE 4)



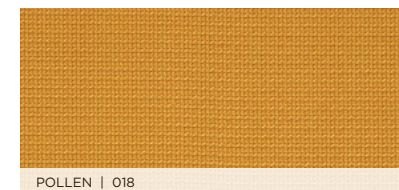
LAVA | 013

METRIC | 466014 (GRADE 4)



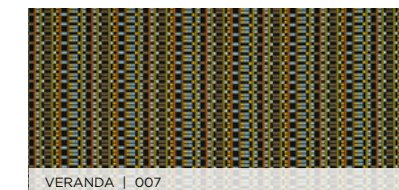
SCUBA | 028

METRIC | 466014 (GRADE 4)



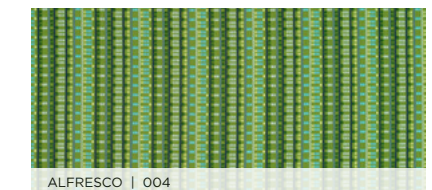
POLLEN | 018

SEQUENCE | 466179 (GRADE 4)



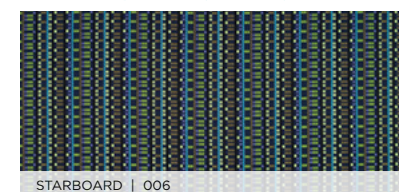
VERANDA | 007

SEQUENCE | 466179 (GRADE 4)



ALFRESCO | 004

SEQUENCE | 466179 (GRADE 4)



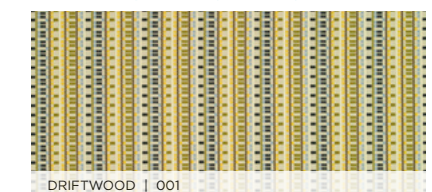
STARBOARD | 006

SEQUENCE | 466179 (GRADE 4)



LODGE | 008

SEQUENCE | 466179 (GRADE 4)

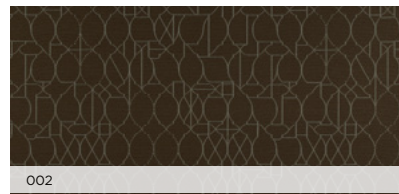


DRIFTWOOD | 001

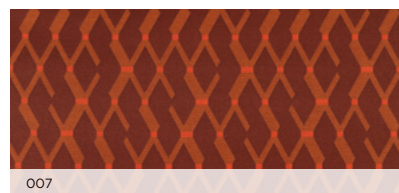
VESTIGE | 466259 (GRADE 9)



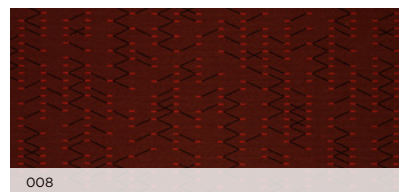
VESTIGE | 466259 (GRADE 9)



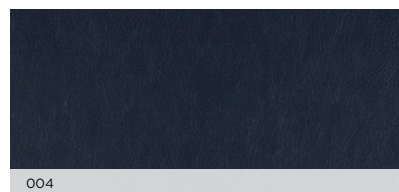
POCKET | 466243 (GRADE 9)



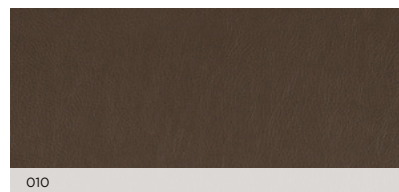
TILT | 466256 (GRADE 9)



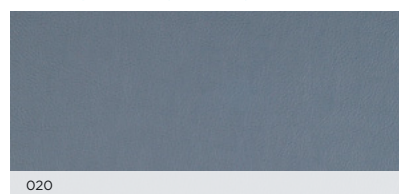
LARIAT | 440401 (GRADE 5)



LARIAT | 440401 (GRADE 5)



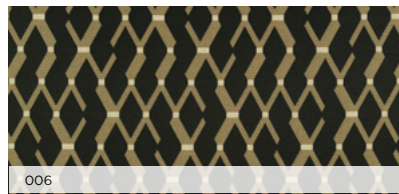
LARIAT | 440401 (GRADE 5)



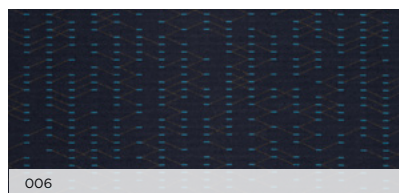
VESTIGE | 466259 (GRADE 9)



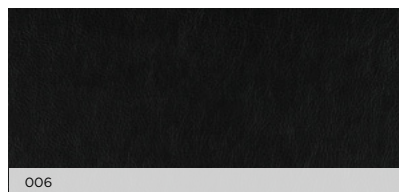
POCKET | 466243 (GRADE 9)



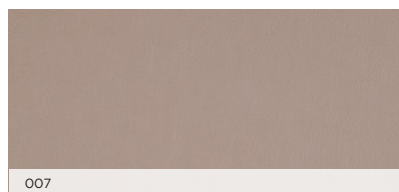
TILT | 466256 (GRADE 9)



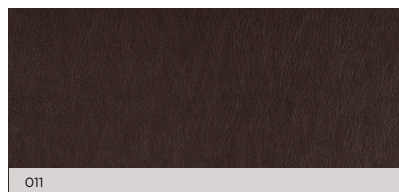
LARIAT | 440401 (GRADE 5)



LARIAT | 440401 (GRADE 5)



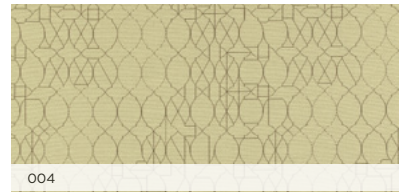
LARIAT | 440401 (GRADE 5)



LARIAT | 440401 (GRADE 5)



VESTIGE | 466259 (GRADE 9)



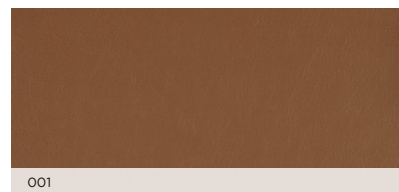
POCKET | 466243 (GRADE 9)



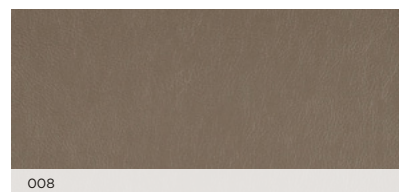
TILT | 466256 (GRADE 9)



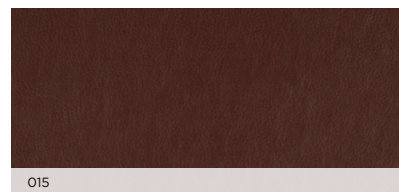
LARIAT | 440401 (GRADE 5)



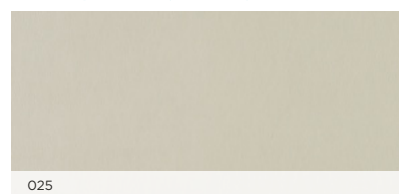
LARIAT | 440401 (GRADE 5)



LARIAT | 440401 (GRADE 5)



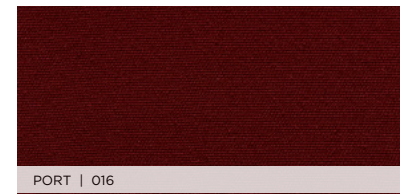
LARIAT | 440401 (GRADE 5)



MEDIUM | 463430 (GRADE 4)



MEDIUM | 463430 (GRADE 4)



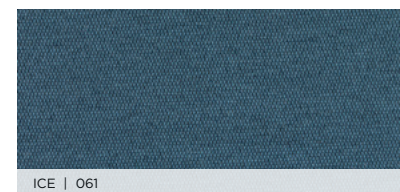
MEDIUM | 463430 (GRADE 4)



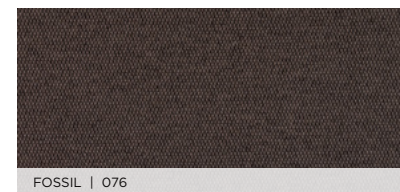
MEDIUM | 463430 (GRADE 4)



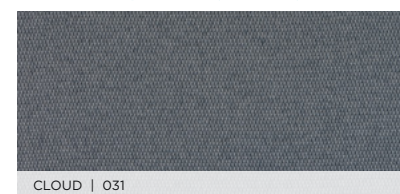
MESSINGER | 458640 (GRADE 4)



MESSINGER | 458640 (GRADE 4)



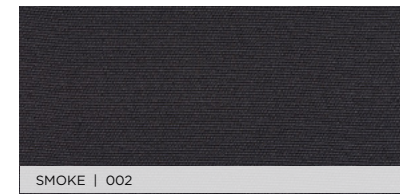
MESSINGER | 458640 (GRADE 4)



MEDIUM | 463430 (GRADE 4)



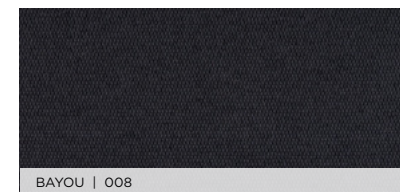
MEDIUM | 463430 (GRADE 4)



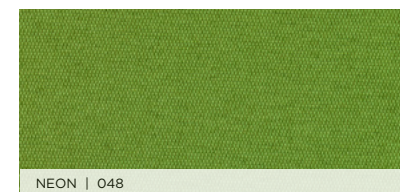
MEDIUM | 463430 (GRADE 4)



MESSINGER | 458640 (GRADE 4)



MESSINGER | 458640 (GRADE 4)



MESSINGER | 458640 (GRADE 4)



MESSINGER | 458640 (GRADE 4)



MEDIUM | 463430 (GRADE 4)



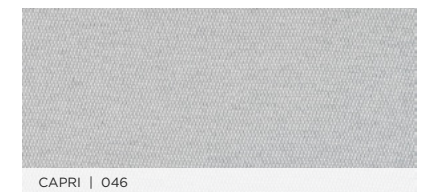
MEDIUM | 463430 (GRADE 4)



MEDIUM | 463430 (GRADE 4)



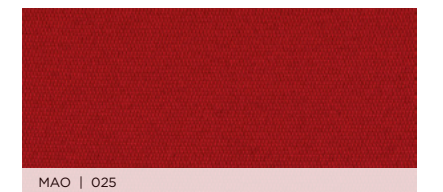
MESSINGER | 458640 (GRADE 4)



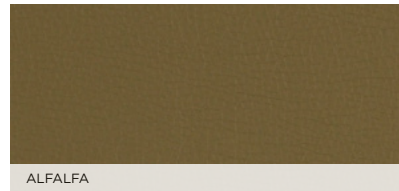
MESSINGER | 458640 (GRADE 4)



MESSINGER | 458640 (GRADE 4)

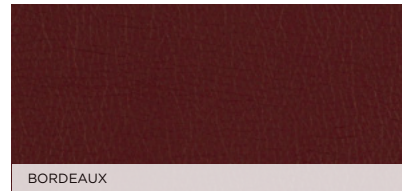


CANTER (GRADE 4)



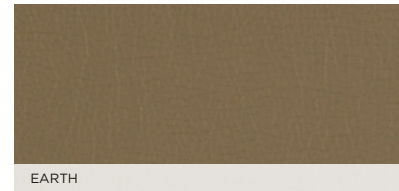
ALFALFA

MANNER | 466177 (GRADE 4)



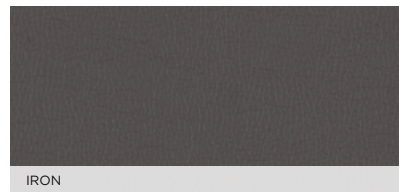
BORDEAUX

CANTER (GRADE 4)



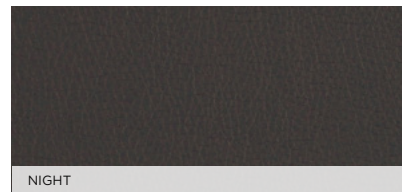
EARTH

CANTER (GRADE 4)



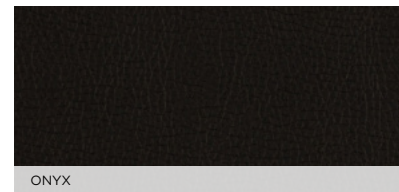
IRON

CANTER (GRADE 4)



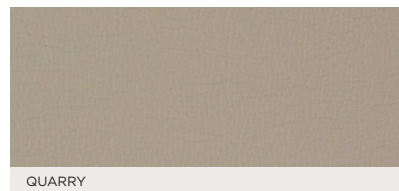
NIGHT

CANTER (GRADE 4)



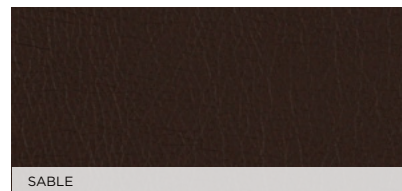
ONYX

CANTER (GRADE 4)



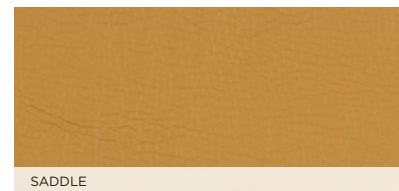
QUARRY

CANTER (GRADE 4)



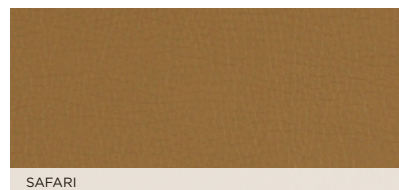
SABLE

CANTER (GRADE 4)



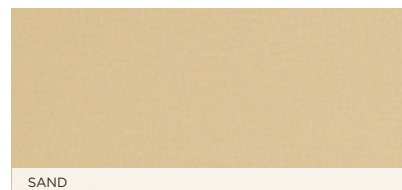
SADDLE

CANTER (GRADE 4)



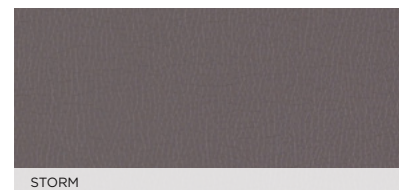
SAFARI

CANTER (GRADE 4)



SAND

CANTER (GRADE 4)



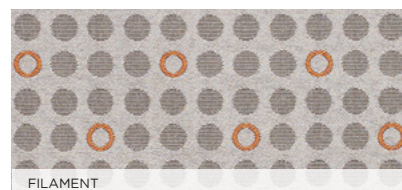
STORM

KNACK (GRADE 5)



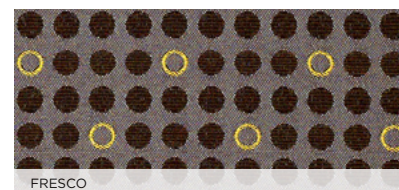
BRISK

KNACK (GRADE 5)



FILAMENT

KNACK (GRADE 5)



FRESCO

KNACK (GRADE 5)



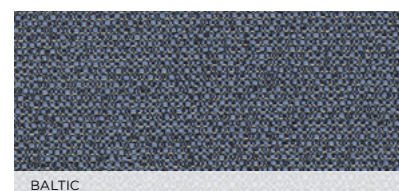
SAX

KNACK (GRADE 5)



TEAK

BANGLE (GRADE 2)



BALTIC

BANGLE (GRADE 2)



CORK

BANGLE (GRADE 2)



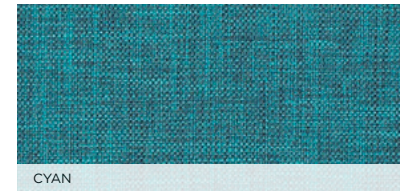
SABLE

BANGLE (GRADE 2)



SUEDE

COVER CLOTH (GRADE 5)



CYAN

COVER CLOTH (GRADE 5)



DELFT

COVER CLOTH (GRADE 5)



FLAME

COVER CLOTH (GRADE 5)



GRAPHITE

COVER CLOTH (GRADE 5)



HICKORY

COVER CLOTH (GRADE 5)



INDIGO

COVER CLOTH (GRADE 5)



PLATINUM

COVER CLOTH (GRADE 5)



SAVOR

COVER CLOTH (GRADE 5)



SORREL

COVER CLOTH (GRADE 5)



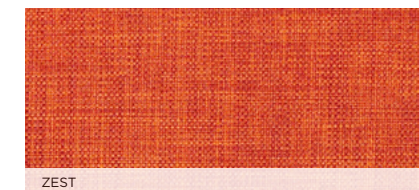
TAUPE

COVER CLOTH (GRADE 5)



VESPER

COVER CLOTH (GRADE 5)



ZEST

FUSE (GRADE 3)



AZUREAN

FUSE (GRADE 3)



LUNAR

FUSE (GRADE 3)



PEPPER

FUSE (GRADE 3)



PRISTINE

FUSE (GRADE 3)



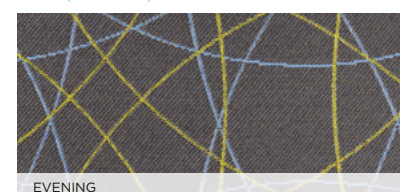
WALNUT

FREE (GRADE 5)



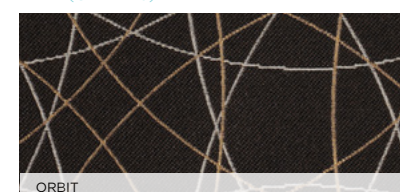
COCOA

FREE (GRADE 5)



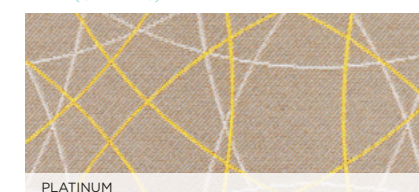
EVENING

FREE (GRADE 5)



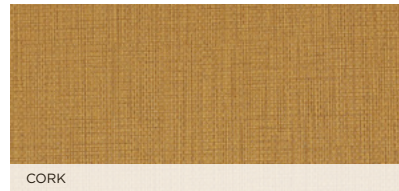
ORBIT

FREE (GRADE 5)



PLATINUM

BEELINE (GRADE 4)



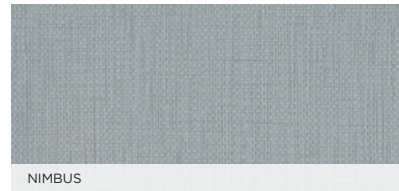
CORK

BEELINE (GRADE 4)



FOSSIL

BEELINE (GRADE 4)



NIMBUS

BEELINE (GRADE 4)



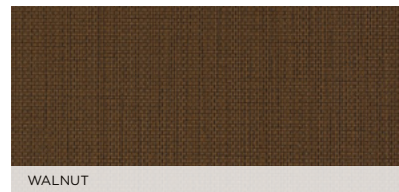
ORIOLE

BEELINE (GRADE 4)



PORTOBELLO

BEELINE (GRADE 4)



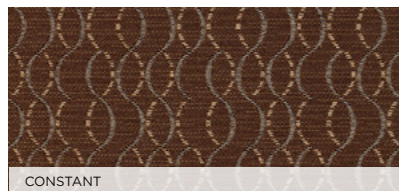
WALNUT

ASCEND (GRADE 6)



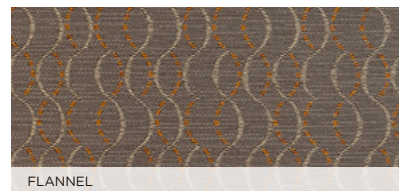
CALM

ASCEND (GRADE 6)



CONSTANT

ASCEND (GRADE 6)



FLANNEL

ASCEND (GRADE 6)



GRAIN

ASCEND (GRADE 6)



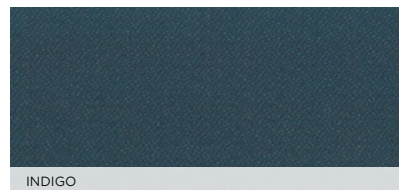
GROW

ASCEND (GRADE 6)



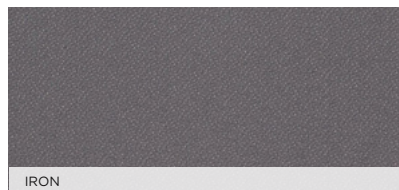
MOOD

ORIGIN (GRADE 2)



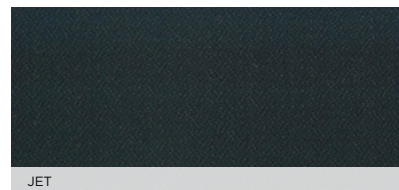
INDIGO

ORIGIN (GRADE 2)



IRON

ORIGIN (GRADE 2)



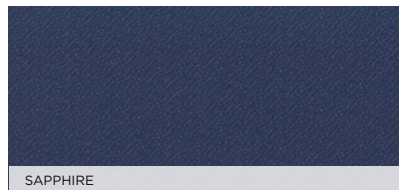
JET

ORIGIN (GRADE 2)



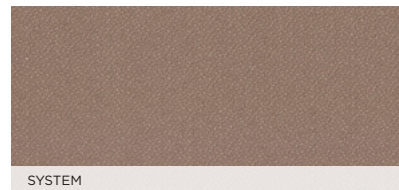
POPPY

ORIGIN (GRADE 2)



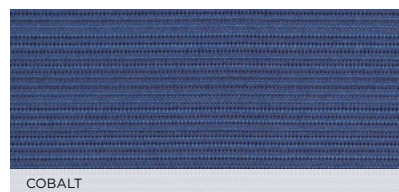
SAPPHIRE

ORIGIN (GRADE 2)



SYSTEM

SKIP (GRADE 4)



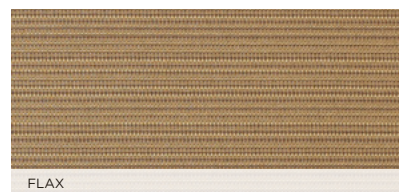
COBALT

SKIP (GRADE 4)



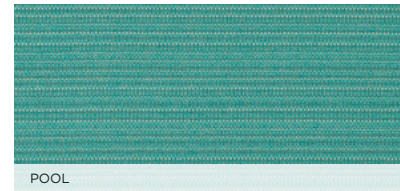
ELM

SKIP (GRADE 4)



FLAX

SKIP (GRADE 4)



POOL

SKIP (GRADE 4)



SAFFRON | 007

SKIP (GRADE 4)



VANILLA

TRADITION (GRADE 4)



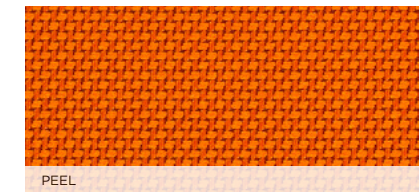
LATTE

TRADITION (GRADE 4)



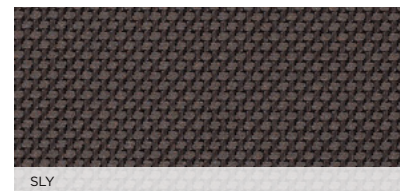
MIST

TRADITION (GRADE 4)



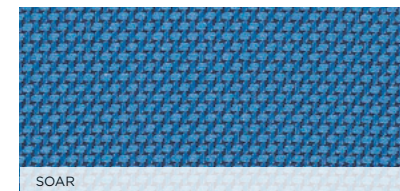
PEEL

TRADITION (GRADE 4)



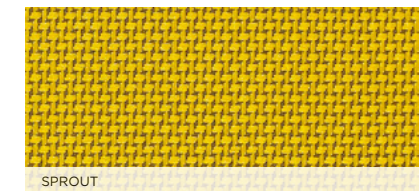
SLY

TRADITION (GRADE 4)



SOAR

TRADITION (GRADE 4)



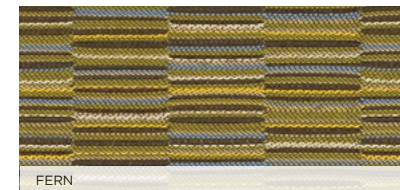
SPROUT

LINEUP (GRADE 4)



BALTIC

LINEUP (GRADE 4)



FERN

LINEUP (GRADE 4)



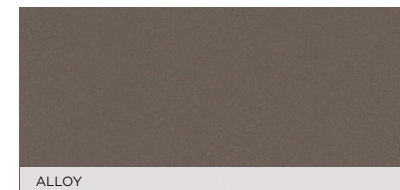
PEWTER

LINEUP (GRADE 4)



SANDSTONE

SILICA (GRADE 7)



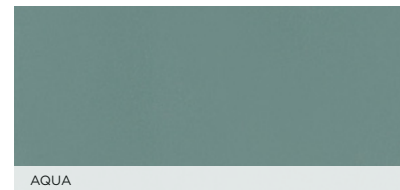
ALLOY

SILICA (GRADE 7)



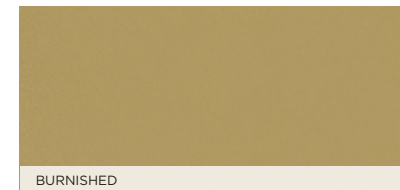
APPLETINI

SILICA (GRADE 7)



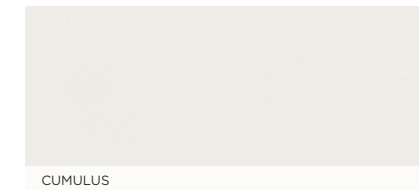
AQUA

SILICA (GRADE 7)



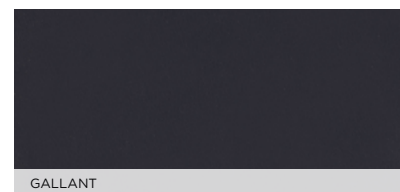
BURNISHED

SILICA (GRADE 7)



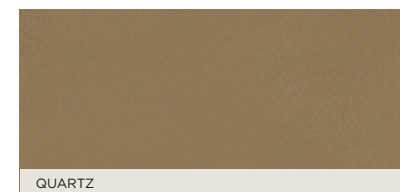
CUMULUS

SILICA (GRADE 7)



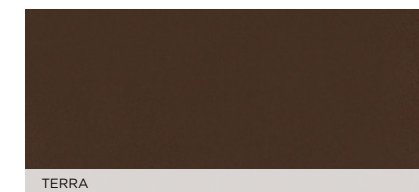
GALLANT

SILICA (GRADE 7)



QUARTZ

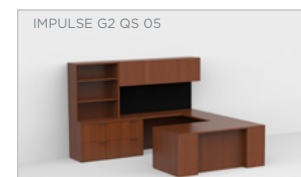



SILICA (GRADE 7)



TERRA







TYPICALS

 <p>IMPULSE G2 QS 05</p> <p>108"W X 100"D</p>	 <p>IMPULSE G2 QS 01</p> <p>72"W X 100"D</p>	 <p>IMPULSE G2 QS 02</p> <p>72"W X 84"D</p>	 <p>IMPULSE G2 QS 03</p> <p>66"W X 72"D</p>
<p>5-2242BR2 5-3619HDW2-2 5-3622LF2-2 5-3643BC3 5-7222FCRL2 5-7236FRPD2 FT2069 (Gr. 4)</p> <p>TOTAL LIST 10,556</p>	<p>5-7222FCR2 5-7236FDP2 5-7243HD4-2 FT1087 (GR.4)</p> <p>TOTAL LIST 8,485</p>	<p>5-2248FRPR2 5-4819HDW3-2 5-7236FLPD2 FT2073 (GR. 4)</p> <p>TOTAL LIST 6,119</p>	<p>5-2242FLPR2 5-3019HDW2-2 5-4219HDW2-2 5-6630FRPD2 FT2074 (GR. 4) FT2076 (GR. 4)</p> <p>TOTAL LIST 6,739</p>

FINISH OPTIONS (AVAILABLE AS HPL OR VENEER) | EUROLUXE™ WITH SIVERBAN ON ALL EXPOSED WOOD SURFACES

<p>LIGHT CHERRY [CHP] [MLC] Flat Cut</p>	<p>NATURAL WALNUT [NWP] [MNV] Quartered Cut</p>	<p>STEEL GRAY OAK [STP] [MGO] Quartered Cut</p>	<p>BLONDE MAPLE [BEP] [MBM] Flat Cut</p>
	<p>Top Surfaces are 1 3/8" Thick with Square Edge</p>		<p>Era Pull In Black or Satin Nickel</p>

TYPICALS





 <p>IMPULSE G2 QS 08</p> <p>108"W X 94"D</p>	 <p>IMPULSE G2 QS 04</p> <p>108"W X 106"D</p>	 <p>IMPULSE G2 QS 06</p> <p>102"W X 102"D</p>	 <p>IMPULSE G2 QS 07</p> <p>88"W X 94"D</p>
<p>5-125ITMP 5-2242BR2 5-2930TEP2 5-3619HDW2 2 5-3672BC2 5-6630BT 5-7222CRRL2 5-CB5</p> <p>TOTAL LIST 9,053</p>	<p>5-2248BR2 5-3672SCL 5-7222CRRL2 5-7236FLPD2 5-7243HD4-2 FT1087 (GR. 4)</p> <p>TOTAL LIST 11,809</p>	<p>5-125ITMP 5-2248BR2 5-2930TEP2 5-3672SW 5-6622FCRL2 5-6630MCT 5-6643HD4-2 5-L2S</p> <p>FT1088(GR. 4)</p> <p>TOTAL LIST 10,614</p>	<p>5-2242FLPR2 5-3019HDW2-2 5-4219HDW2-2 5-6630FRPD2 FT2074 (GR. 4) FT2076 (GR. 4)</p> <p>TOTAL LIST 7,534</p>

FINISH OPTIONS (AVAILABLE AS HPL OR VENEER) | EUROLUXE™ WITH SIVERBAN ON ALL EXPOSED WOOD SURFACES


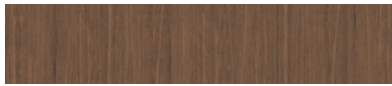
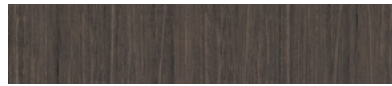


<p>LIGHT CHERRY [CHP] [MLC] Flat Cut</p>	<p>NATURAL WALNUT [NWP] [MNV] Quartered Cut</p>	<p>STEEL GRAY OAK [STP] [MGO] Quartered Cut</p>	<p>BLONDE MAPLE [BEP] [MBM] Flat Cut</p>
	<p>Top Surfaces are 1 3/8" Thick with Square Edge</p>		<p>Era Pull In Black or Satin Nickel</p>







TYPICALS

 <p>PULSE CASEGOODS QS 01</p> <p>72"W X 106"D</p> <p>4-7222FCRD 4-7236FDP 4-7243HD4-2 FT1087 (Gr. 4)</p> <p>TOTAL LIST 5,269</p>	 <p>PULSE CASEGOODS QS 02</p> <p>72"W X 84"D</p> <p>4-2248FRPR 4-4821HDW3 4-7236FLPD FT2073 (Gr. 4)</p> <p>TOTAL LIST 3,832</p>	 <p>PULSE CASEGOODS QS 03</p> <p>72"W X 84"D</p> <p>4-2248FLPR 4-3622LW2 4-7236FRPD FT2073 (Gr. 4) FT2075 (Gr. 4)</p> <p>TOTAL LIST 4,805</p>	 <p>PULSE CASEGOODS QS 04</p> <p>108"W X 106"D</p> <p>4-2248BR 4-3622LF2 4-3643BC2 4-7222FCRR 4-7236FLPD 4-7243HD4-2 FT1087 (Gr. 4)</p> <p>TOTAL LIST 6,470</p>
--	---	--	---


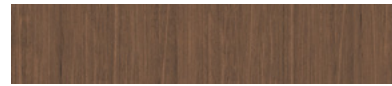
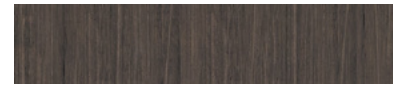


FINISH OPTIONS (AVAILABLE AS TFL OR HPL)

 <p>LIGHT CHERRY [LC2] [CHP] Flat Cut</p>	 <p>NATURAL WALNUT [NW2] [NWP] Quartered Cut</p>	 <p>STEEL GRAY OAK [ST2] [STP] Quartered Cut</p>
 <p>1½" thick worksurfaces are thermally-fused laminate with a 3mm PVC edge</p>	 <p>Era Pull in Black or Satin Nickel</p>	

TYPICALS




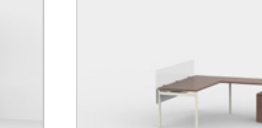
 <p>PULSE CASEGOODS QS 09</p> <p>108"W X 100"D</p> <p>4-2242BR 4-3019HSW 4-4221HDW2 4-7222CRLL 4-7236FRPD 4-7236SCL FT2069 (Gr. 4)</p> <p>TOTAL LIST 7,307</p>	 <p>PULSE CASEGOODS QS 06</p> <p>107.625"W X 100"D</p> <p>4-1252TMP 4-2242BR 4-2936MEP 4-3656LF4 4-7222FCRL 4-7236BT 4-CB4 SPTR48</p> <p>TOTAL LIST 5,081</p>	 <p>PULSE CASEGOODS QS 07</p> <p>87.625"W X 106"D</p> <p>4-1252TMPG 4-1621MPC 4-2248BR 4-2936MEP 4-7216RSW 4-7236MCT 4-7243HD4-2 4-L2S</p> <p>FT1087 (Gr. 4) SPTR48</p> <p>TOTAL LIST 7,310</p>	 <p>PULSE CASEGOODS QS 08</p> <p>108"W X 106"D</p> <p>4-2248BR 4-7222FCRR 4-7236FLPD 4-7236Sw 4-7243HD4-2 FT1087 (Gr. 4)</p> <p>TOTAL LIST 6,660</p>
--	---	---	--

FINISH OPTIONS (AVAILABLE AS TFL OR HPL)


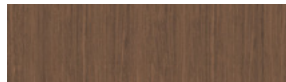
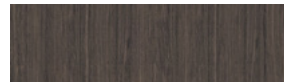


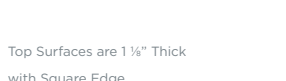
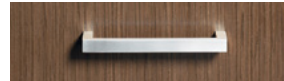

 <p>LIGHT CHERRY [LC2] [CHP] Flat Cut</p>	 <p>NATURAL WALNUT [NW2] [NWP] Quartered Cut</p>	 <p>STEEL GRAY OAK [ST2] [STP] Quartered Cut</p>
 <p>1½" thick worksurfaces are thermally-fused laminate with a 3mm PVC edge</p>	 <p>Era Pull in Black or Satin Nickel</p>	



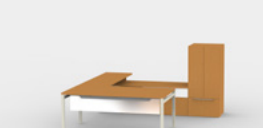



TYPICALS

<p>STAKS PRIVATE OFFICE QS 02</p>  <p>87.625"W X 102"D</p>	<p>STAKS PRIVATE OFFICE QS 01</p>  <p>72"W X 106"D</p>	<p>STAKS PRIVATE OFFICE QS 03</p>  <p>66"W X 72"D</p>	<p>STAKS PRIVATE OFFICE QS 05</p>  <p>66"W X 78"D</p>
<p>6-1672RSC2 6-NL3621MP6 6-3619HDW2 6-NL3622MPD8 6-AMPC64 6-NW1627MPDI 6-MBT-72/36 6-RSP-18/9.5 6-MCT-66/22 CP-1 6-MCT-72/22 FT2198 (Gr. 4) 6-MPB-2 SPTR48 6-NI628RWA</p> <p>TOTAL LIST 10,886</p>	<p>6-2822MEP 6-NW1627MPD1 6-2830TEP 6-NW3622MPD3 6-28MCBC 35 CP-1 (qty 4) 6-7243MHDL FT1220 (Gr. 4) 6-WMPD SPTR54 (qty 2) 6-MBT-72/36 6-MCT-48/22 6-MCT-72/22</p> <p>TOTAL LIST 9,379</p>	<p>6-2830TEP 6-NW1622MPD3 6-7231HSDW CP-1 (qty 2) 6-AMPC49 FT2198 (Gr. 4) 6-BT-66/30 6-L2S 6-MCT-42/22 6-MPB-2 (qty 2) 6-NW1622MPD1</p> <p>TOTAL LIST 7,120</p>	<p>6-1619MP7 MBAR-66 6-22HBA2 SPTR54 (qty 2) 6-30HBA2 WEBKT-1 (qty 3) 6-MCT-48/22 6-MCT-66/30 6-WEMA-66/23.75 66 CP-1 (qty 2)</p> <p>TOTAL LIST 3,514</p>


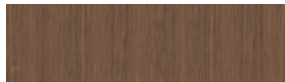
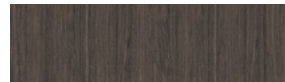


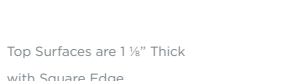
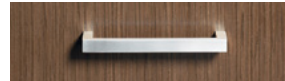

FINISH OPTIONS (AVAILABLE AS TFL, HPL OR VENEER) | EUROLUXE™ WITH SIVERBAN ON ALL EXPOSED WOOD SURFACES

			
LIGHT CHERRY [LC2] [CHP] [MLC] <i>Flat Cut</i>	NATURAL WALNUT [MW2] [NWP] [MNW] <i>Quartered Cut</i>	STEEL GRAY OAK [ST2] [STP] [MGO] <i>Quartered Cut</i>	BLONDE MAPLE (VENEER ONLY) [MBM] <i>Flat Cut</i>
			
Top Surfaces are 1 1/8" Thick with Square Edge		Era Pull in Black or Satin Nickel	

TYPICALS

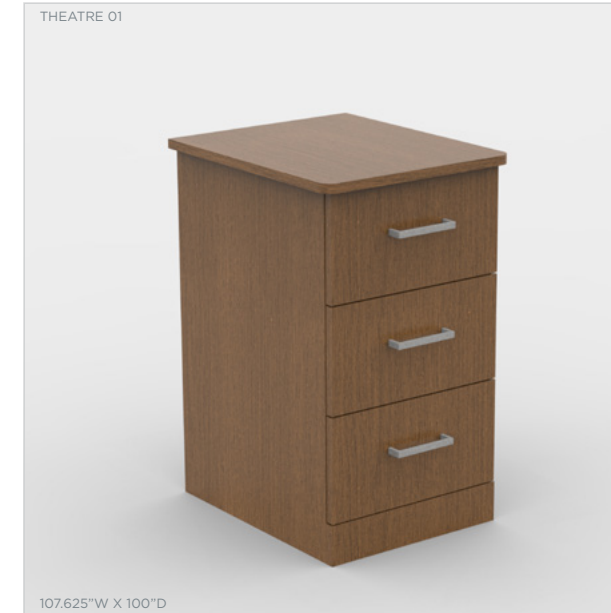
<p>STAKS PRIVATE OFFICE QS 04</p>  <p>96"W X 102"D</p>	<p>STAKS PRIVATE OFFICE QS 06</p>  <p>72"W X 114"D</p>	<p>STAKS PRIVATE OFFICE QS 08</p>  <p>66"W X 117.625"D</p>	<p>STAKS PRIVATE OFFICE QS 10</p>  <p>72"W X 120"D</p>
<p>6-2454SC2 6-NL3622MPD8 6-36HBA1 6-RSP-18/9.5 6-AMPC64 CP-1 6-MCT-66/22 MBAR-72 6-MCT-72/22 SPTR48 6-MCT-72/36 SPTR60 6-MPB-2 6-NL3622MPD5</p> <p>TOTAL LIST 8,974</p>	<p>6-2830TEP 6-N3629LF2 (qty 2) 6-NW1622MPD1 6-28MCBB 72 CP-1 (qty 2) 6-3619HDW2 SPTR66 (qty 2) (qty 2) 6-3643BC 6-MCT-42/22 6-MCT-72/36</p> <p>TOTAL LIST 5,480</p>	<p>6-1672RSC5 CP-1 (qty 2) 6-3019HDW2 FT2199 (Gr. 4) 6-3619HDW2 MBAR-66 6-36HBA1 SPRT48 6-KMPC 62 SPTR54 (qty 2) 6-MCT-66/22 6-MCT-66/36 6-NW1622MPD1</p> <p>TOTAL LIST 6,103</p>	<p>6-1619MP8 6-N3654LF4 6-1619SC2 CP-1 (qty 2) 6-2822TEP 6-28MCBC 40.75 6-MBT-72/36 6-MCT-48/22 6-NI628LWA 6-NI628RWA</p> <p>TOTAL LIST 5,199</p>

FINISH OPTIONS (AVAILABLE AS TFL, HPL OR VENEER) | EUROLUXE™ WITH SIVERBAN ON ALL EXPOSED WOOD SURFACES

			
LIGHT CHERRY [LC2] [CHP] [MLC] <i>Flat Cut</i>	NATURAL WALNUT [MW2] [NWP] [MNW] <i>Quartered Cut</i>	STEEL GRAY OAK [ST2] [STP] [MGO] <i>Quartered Cut</i>	BLONDE MAPLE (VENEER ONLY) [MBM] <i>Flat Cut</i>
			
Top Surfaces are 1 1/8" Thick with Square Edge		Era Pull in Black or Satin Nickel	



TYPICALS



107.625"W X 100"D

THA-W1721BC1 (Flat Drawer Front)

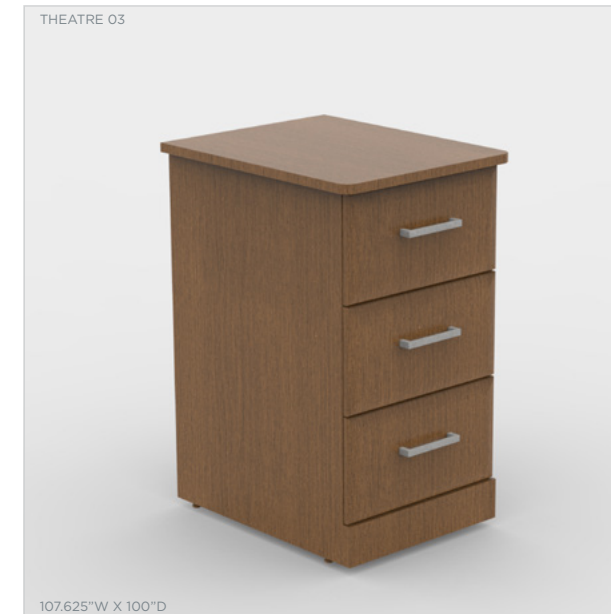
TOTAL LIST 1,062



107.625"W X 100"D

THB-W1721BC1

TOTAL LIST 1,629



107.625"W X 100"D

THD-W1721BC1 (Radius Drawer Front)

TOTAL LIST 1,330



107.625"W X 100"D

LEFT-HINGED RIGHT-HINGED
THE-W1721LBC4 THE-W1721RBC4

TOTAL LIST 1,687

FEATURES: VENTED BACK | ADJUSTABLE LEVELERS | BASE RAIL

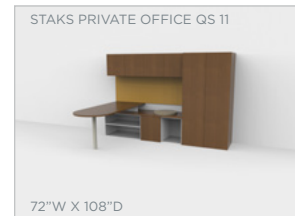
TYPICALS



87.625"W X 136"D

- 6-1672RSC2
- 6-20RSC
- 6-2822TEP
- 6-BT-72/30
- 6-L2S
- 6-MCT-42/22
- 6-MCT-72/22
- 6-NL3621MPD6
- 6-NL3622MPD8
- 6-NW3622MPD3
- 6-RSP-26/9.5
- CP-1

TOTAL LIST 6,025



72"W X 108"D

- 6-20RSC
- 6-3619HDW2
- 6-3672SC1
- 6-BT-72/30
- 6-L2S
- 6-MCT-72/22
- 6-NL3621MPD6
- 6-NL3622MPD5
- 6-RSP-26/9.5
- FT2198 (Gr. 4)

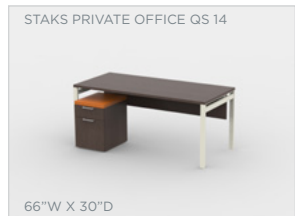
TOTAL LIST 6,397



66"W X 94"D

- 6-2822TEP
- 6-2830TEP
- 6-3019HDW2
- 6-3619HDW2
- 6-AMPC 49
- 6-BT-66/30
- 6-L2S
- 6-MCT-42/22
- 6-MCT-66/22
- 6-MPB-2 (qty 2)
- 6-MPB-2 (qty 2)
- 6-NW3622MPD3
- CP-1 (qty 4)
- FT2199 (Gr. 4)

TOTAL LIST 6,433



66"W X 30"D

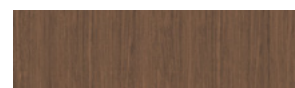
- 6-1619MP8
- 6-1619SC2
- 6-30HBA2
- 6-KMPC 64
- 6-MCT-66/30
- MBAR-66

TOTAL LIST 1,814

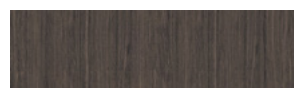
FINISH OPTIONS (AVAILABLE AS TFL, HPL OR VENEER) | EUROLUXE™ WITH SIVERBAN ON ALL EXPOSED WOOD SURFACES



LIGHT CHERRY [LC2] [CHP] [MLC]
Flat Cut



NATURAL WALNUT [MW2] [NWP] [MNW]
Quartered Cut



STEEL GRAY OAK [ST2] [STP] [MGO]
Quartered Cut



BLONDE MAPLE (VENEER ONLY) [MBM]
Flat Cut





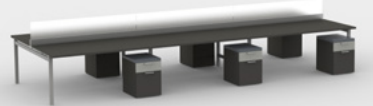
Top Surfaces are 1 1/2" Thick
with Square Edge




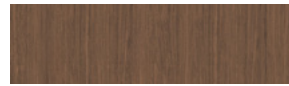
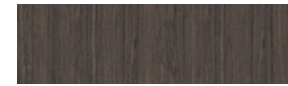



Era Pull in Black or Satin Nickel






TYPICALS

<p>STAKS BENCHING QS 02</p>  <p>198"W X 152"D</p> <ul style="list-style-type: none"> 6-3619sc 6-42CHBA1 6-64HBA2 6-A198TRKA3 6-MCT-66/36 6-NL6019FSL 6-NL6019FSR 6-PVPA-65.63/12.8 <p>TOTAL LIST 22,675</p>	<p>STAKS BENCHING QS 01</p>  <p>198"W X 76"D</p> <ul style="list-style-type: none"> 6-42CHBA1 (qty 2) 6-64HBA2 6-A198TRKA3 6-MCT-66/36 (qty 6) 6-PVPA-65.63/18.8 (qty 3) DPX8W1 (qty 3) DPX8W2 (qty 3) <p>TOTAL LIST 11,236</p>	<p>STAKS BENCHING QS 03</p>  <p>198"W X 76"D</p> <ul style="list-style-type: none"> 6-1619MP8 (qty 6) 6-1619SC2 (qty 6) 6-42CHBA1 (qty 2) 6-64HBA2 6-A198TRKA3 6-MCT-66/36 (qty 6) 6-PVPA-65.63/12.8 (qty 3) DPX8W1 (qty 3) DPX8W3 (qty 3) DPX8W4 (qty 3) PS-198PKE6-4 PWF3M120 WM-198CBK-3 <p>TOTAL LIST 15,745</p>
--	---	--


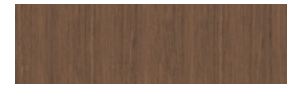
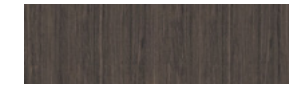



FINISH OPTIONS (AVAILABLE AS TFL, HPL OR VENEER) | EUROLUXE™ WITH SIVERBAN ON ALL EXPOSED WOOD SURFACES

 <p>LIGHT CHERRY [LC2] [CHP] [MLC] <i>Flat Cut</i></p>	 <p>NATURAL WALNUT [MW2] [NWP] [MNW] <i>Quartered Cut</i></p>	 <p>STEEL GRAY OAK [ST2] [STP] [MGO] <i>Quartered Cut</i></p>	 <p>BLONDE MAPLE (VENEER ONLY) [MBM] <i>Flat Cut</i></p>
 <p>Top Surfaces are 1 1/2" Thick with Square Edge</p>		 <p>Era Pull in Black or Satin Nickel</p>	

TYPICALS

<p>STAKS BENCHING QS 06</p>  <p>132"W X 64"D</p> <ul style="list-style-type: none"> 6-1619MP8 6-1619SC2 6-42CHBA1 6-64HBA2 6-A132TRKA2 6-MCT-66/30 6-PVPA-65.63/12.8 DPX8W1 DPX8W2 DPX8W3 DPX8W4 PS-132PKE4-4 PWF3M120 WM-132CBK-2 <p>TOTAL LIST 12,646</p>	<p>STAKS BENCHING QS 04</p>  <p>132"W X 64"D</p> <ul style="list-style-type: none"> 6-42CHBA1 6-64HBA2 6-A132TRKA2 6-MCT-66/30 (qty 4) 6-PVPA-65.63/18.8 (qty 2) DPX8W1 (qty 2) DPX8W2 (qty 2) DPX8W3 (qty 2) DPX8W4 (qty 2) PS-132PKE4-4 PWF3M120 WM-132CBK-2 <p>TOTAL LIST 7,380</p>	<p>STAKS BENCHING QS 05</p>  <p>132"W X 120"D</p> <ul style="list-style-type: none"> 6-3019SC (qty 4) 6-42CHBA1 6-64HBA2 6-A132TRKA2 6-MCT-66/30 (qty 4) 6-NL4819FSL (qty 2) 6-NL4819FSR (qty 2) 6-PVPA-65.63/12.8 (qty 2) DPX8W1 (qty 2) DPX8W2 (qty 2) DPX8W3 (qty 2) DPX8W4 (qty 2) PS-132PKE4-4 PWF3M120 WM-132CBK-2 <p>TOTAL LIST 17,858</p>
--	---	---

FINISH OPTIONS (AVAILABLE AS TFL, HPL OR VENEER) | EUROLUXE™ WITH SIVERBAN ON ALL EXPOSED WOOD SURFACES

 <p>LIGHT CHERRY [LC2] [CHP] [MLC] <i>Flat Cut</i></p>	 <p>NATURAL WALNUT [MW2] [NWP] [MNW] <i>Quartered Cut</i></p>	 <p>STEEL GRAY OAK [ST2] [STP] [MGO] <i>Quartered Cut</i></p>	 <p>BLONDE MAPLE (VENEER ONLY) [MBM] <i>Flat Cut</i></p>
 <p>Top Surfaces are 1 1/2" Thick with Square Edge</p>		 <p>Era Pull in Black or Satin Nickel</p>	



TYPICALS



A6024R
TFL Top
Frosted Acrylic Modesty
Duce Center Flip & Nest Base on Caster

TOTAL LIST 1,591



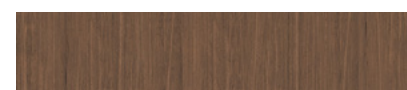
A7224R
TFL Top
No Modesty
Duce Center Static Base with Glide

TOTAL LIST 802

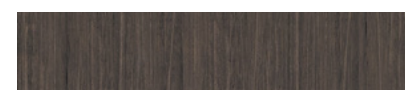
FINISH OPTIONS (AVAILABLE AS TFL OR HPL)



LIGHT CHERRY [LC2] [CHP]
Flat Cut



NATURAL WALNUT [NW2] [NWP]
Quartered Cut



STEEL GRAY OAK [ST2] [STP]
Quartered Cut



Top Surfaces are 1 1/8" Thick with Square Edge

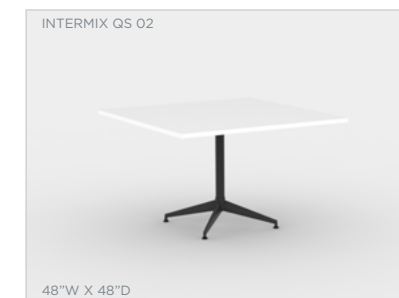
Bases come static or flip/nest
Modesty panels available in frosted acrylic or TFL

TYPICALS



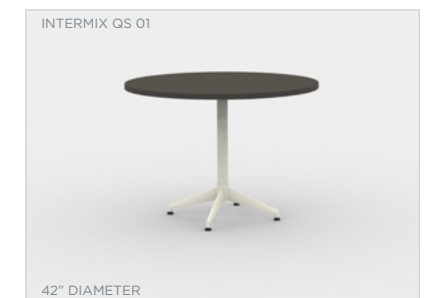
ASK4218
CC-P7236RT

TOTAL LIST 1,465



ASX38
CC-K4848ST

TOTAL LIST 861



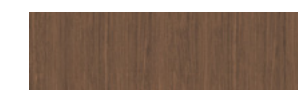
CC-K4242RT
ASX32

TOTAL LIST 967

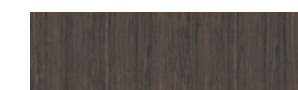
FINISH OPTIONS (AVAILABLE AS TFL, HPL OR VENEER) | EUROLUXE™ WITH SIVERBAN ON ALL EXPOSED WOOD SURFACES



LIGHT CHERRY [LC2] [CHP] [MLC]
Flat Cut



NATURAL WALNUT [MW2] [NWP] [MNV]
Quartered Cut



STEEL GRAY OAK [ST2] [STP] [MGO]
Quartered Cut



BLONDE MAPLE (VENEER ONLY) [MBM]
Flat Cut






Top Surfaces are 1 1/8" Thick with Square Edge




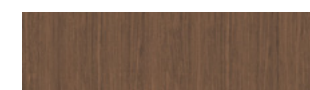
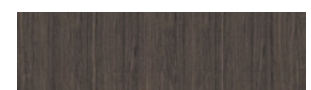



Era Pull in Black or Satin Nickel







TYPICALS

<p>INTERMIX QS 05</p>  <p>144"W X 48"D</p>	<p>INTERMIX QS 04</p>  <p>120"W X 48"D</p>	<p>INTERMIX QS 06</p>  <p>96"W X 48"D</p>
<p>CC-PI4448BT CC-M24TPB (qty 3) CC-M7136BCC</p> <p>TOTAL LIST6,144</p>	<p>CC-PI2048AT CC-M24PB (qty 3)</p> <p>TOTAL LIST2,759</p>	<p>CC-W9648CBT</p> <p>TOTAL LIST4,923</p>


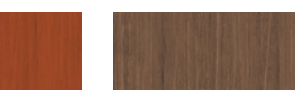
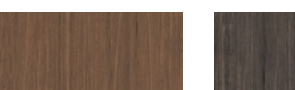


FINISH OPTIONS (AVAILABLE AS TFL, HPL OR VENEER) | EUROLUXE™ WITH SIVERBAN ON ALL EXPOSED WOOD SURFACES

			
<p>LIGHT CHERRY [LC2] [CHP] [MLC] Flat Cut</p>	<p>NATURAL WALNUT [MW2] [NWP] [MNW] Quartered Cut</p>	<p>STEEL GRAY OAK [ST2] [STP] [MGO] Quartered Cut</p>	<p>BLONDE MAPLE (VENEER ONLY) [MBM] Flat Cut</p>
 <p>Top Surfaces are 1 1/2" Thick with Square Edge</p>		 <p>Era Pull in Black or Satin Nickel</p>	

TYPICALS

<p>PULSE CONFERENCE QS 03</p>  <p>144"W X 48"D</p>	<p>PULSE CONFERENCE QS 01</p>  <p>48" DIAMETER</p>	<p>PULSE CONFERENCE QS 02</p>  <p>96"W X 42"D</p>	<p>PULSE CONFERENCE QS 04</p>  <p>120"W X 48"D</p>
<p>4-14448RT 4-24PB (qty 3)</p> <p>TOTAL LIST2,360</p>	<p>4-48RT TSX38</p> <p>TOTAL LIST1,155</p>	<p>4-9642AT 4-24PB (qty 2)</p> <p>TOTAL LIST1,773</p>	<p>4-12048BT 4-24PB 4-7036BCC</p> <p>TOTAL LIST4,730</p>

FINISH OPTIONS (AVAILABLE AS TFL OR HPL)

		
<p>LIGHT CHERRY [LC2] [CHP] Flat Cut</p>	<p>NATURAL WALNUT [NW2] [NWP] Quartered Cut</p>	<p>STEEL GRAY OAK [ST2] [STP] Quartered Cut</p>
 <p>1 1/2" thick worksurfaces are thermally-fused laminate with a 3mm PVC edge</p>		 <p>Era Pull in Black or Satin Nickel</p>

TYPICALS



820-18RD (Round End Table)

LIST 779

820-30RD (Round Cocktail Table)

LIST 1,078

FINISH OPTIONS

- LIGHT CHERRY [MLC] [CHP]
- NATURAL WALNUT [MNW] [NWP]
- STEEL GRAY OAK [MGO] [STP]
- BLONDE MAPLE VENEER [MBM]

FEATURES

- EUROLUXE™ WITH SIVERBAN ON ALL EXPOSED WOOD SURFACES



7249 (Square End Table)

LIST 1,541

7248 (Rectangular Cocktail Table)

LIST 1,887

FINISH OPTIONS

- LIGHT CHERRY [MLC]
- NATURAL WALNUT [MNW]
- STEEL GRAY OAK [MGO]
- BLONDE MAPLE VENEER [MBM]

FEATURES

- BRUSHED ALUMINUM
- EUROLUXE™ WITH SIVERBAN ON ALL EXPOSED WOOD SURFACES



EFC108-18RD (Round End Table)

LIST 806

EFC108-32RD (Round Cocktail Table)

LIST 945

FINISH OPTIONS

- LIGHT CHERRY [MLC] [CHP]
- NATURAL WALNUT [MNW] [NWP]
- STEEL GRAY OAK [MGO] [STP]
- BLONDE MAPLE VENEER [MBM]

FEATURES

- EUROLUXE™ WITH SIVERBAN ON ALL EXPOSED WOOD SURFACES



310-22RD (Round End Table)

LIST 867

310-30RD (Round Cocktail Table)

LIST 1,108

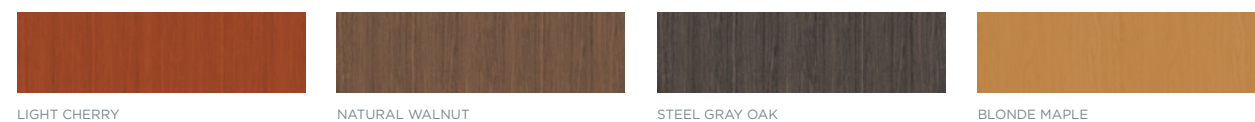
FINISH OPTIONS

- LIGHT CHERRY [MLC] [CHP]
- NATURAL WALNUT [MNW] [NWP]
- STEEL GRAY OAK [MGO] [STP]
- BLONDE MAPLE VENEER [MBM]

FEATURES

- EUROLUXE™ WITH SIVERBAN ON ALL EXPOSED WOOD SURFACES
- KNIFE EDGE

FINISH OPTIONS REFERENCE



LIGHT CHERRY

NATURAL WALNUT

STEEL GRAY OAK

BLONDE MAPLE

TYPICALS



810-20RD-20 (Cylinder End Table)

LIST 958

818150-36RD-15 (Cylinder Cocktail Table)

LIST 1,397

FINISH OPTIONS

- LIGHT CHERRY [MLC] [CHP]
- NATURAL WALNUT [MNW] [NWP]
- STEEL GRAY OAK [MGO] [STP]
- BLONDE MAPLE VENEER [MBM]

FEATURES

- EUROLUXE™ WITH SIVERBAN ON ALL EXPOSED WOOD SURFACES



LT03-M2222CT (Square End Table)

LIST 610

FINISH OPTIONS

- LIGHT CHERRY [LC2] [CHP]
- NATURAL WALNUT [EN2] [NWP]
- STEEL GRAY OAK [ST2] [STP]

FEATURES

- THERMALLY-FUSED LAMINATE WITH A 1MM PVC EDGE
- GREY TUBULAR STEEL LEGS



9570 (Round End Table)

LIST 1,657

9573 (Round Cocktail Table)

LIST 1,956

FINISH OPTIONS

- LIGHT CHERRY [MLC]
- NATURAL WALNUT [MNW]
- STEEL GRAY OAK [MGO]
- BLONDE MAPLE VENEER [MBM]

FEATURES

- EUROLUXE™ WITH SIVERBAN ON ALL EXPOSED WOOD SURFACES
- WOOD LEGS
- BRUSHED ALUMINUM BANDING

FINISH OPTIONS REFERENCE



LIGHT CHERRY

NATURAL WALNUT

STEEL GRAY OAK

BLONDE MAPLE

TYPICALS



MODELS

- 203041 **LIST** ... 1,585 (Gr. 2) *Lounge Seat*
- 203042 **LIST** ... 2,286 (Gr. 2) *Loveseat*
- 203043 **LIST** ... 2,636 (Gr. 2) *Sofa*

FEATURES

- FULLY UPHOLSTERED
- LOOSE SEAT AND BACK CUSHIONS
- PLAIN / NON-TUFTED SEAT AND BACK CUSHIONS
- MUST SPECIFY LEG STYLE



MODELS

- 50041-L **LIST**891 (Gr. 2) *Low back lounge 22"w (no arms)*
- 50141-L **LIST**968 (Gr. 2) *Low back lounge 28"w (no arms)*
- 50042-L **LIST** ... 1,366 (Gr. 2) *Low back loveseat 44"w (no arms)*
- 50041-LA **LIST** ... 1,975 (Gr. 2) *Low back lounge 22"w (with arms)*
- 50141-LA **LIST** ... 1,170 (Gr. 2) *Low back lounge 28"w (with arms)*
- 50042-LA **LIST** ... 1,667 (Gr. 2) *Low back loveseat 44"w (with arms)*

FEATURES

- FULLY UPHOLSTERED
- SINUOUS SPRINGS IN SEAT
- UPHOLSTERED ARMS
- EXPOSED BACK FOOT FOR STABILITY
- OPTIONAL ELECTRICAL IN SEAT SIDE
- FACING(B9M) ELECTRICAL LOCATION
- SPECIFY FABRIC FOR BENCH SEAT
- SPECIFY FABRIC FOR ARMS AND INSIDE/OUTSIDE BACK



MODELS

- F44041 **LIST** ... 1,473 (Gr. 2) *Lounge*
- F44042 **LIST** ... 2,008 (Gr. 2) *Loveseat*
- F44043 **LIST** ... 2,509 (Gr. 2) *Sofa*

FEATURES

- FULLY UPHOLSTERED
- SINUOUS SPRINGS IN SEAT
- SPECIFY LEG OPTION
- (YL) BRUSHED NICKEL LEGS
- (YM) EXPOSED WOOD LEGS
- (B9B) METAL POST LEGS - ADD \$108 LIST
- SPECIFY FINISH (YM WOOD LEG OPTION ONLY)
- SPECIFY GRADE/FABRIC

TYPICALS



MODELS

- F43041 **LIST** ... 1,292 (Gr. 2) *Lounge*
- F43042 **LIST** ... 1,722 (Gr. 2) *Loveseat*
- F43043 **LIST** ... 2,317 (Gr. 2) *Sofa*

FEATURES

- FULLY UPHOLSTERED
- CONCEALED GLIDE
- SINUOUS SPRINGS IN SEAT
- SPECIFY GRADE/FABRIC



MODELS

- 470-1 **LIST** ... 1,658 (Gr. 2) *Lounge*
- 470-2 **LIST** ... 2,809 (Gr. 2) *Loveseat*
- 470-3 **LIST** ... 3,806 (Gr. 2) *Sofa*

FEATURES

- CLEAN-OUT SPACE BETWEEN SEAT AND BACK
- UPHOLSTERED SEAT AND BACK
- TIGHT CUSHION
- EUROPEAN BEECH ARM CAPS
- PLASTIC ADJUSTABLE GLIDE
- EUROLUXE WITH SILVERBAN ON ALL EXPOSED WOOD SURFACES
- WARM GREY (WITH SILVR ION ANTIMICROBIAL) POWDER COAT ON ALL EXPOSED METAL IS STANDARD



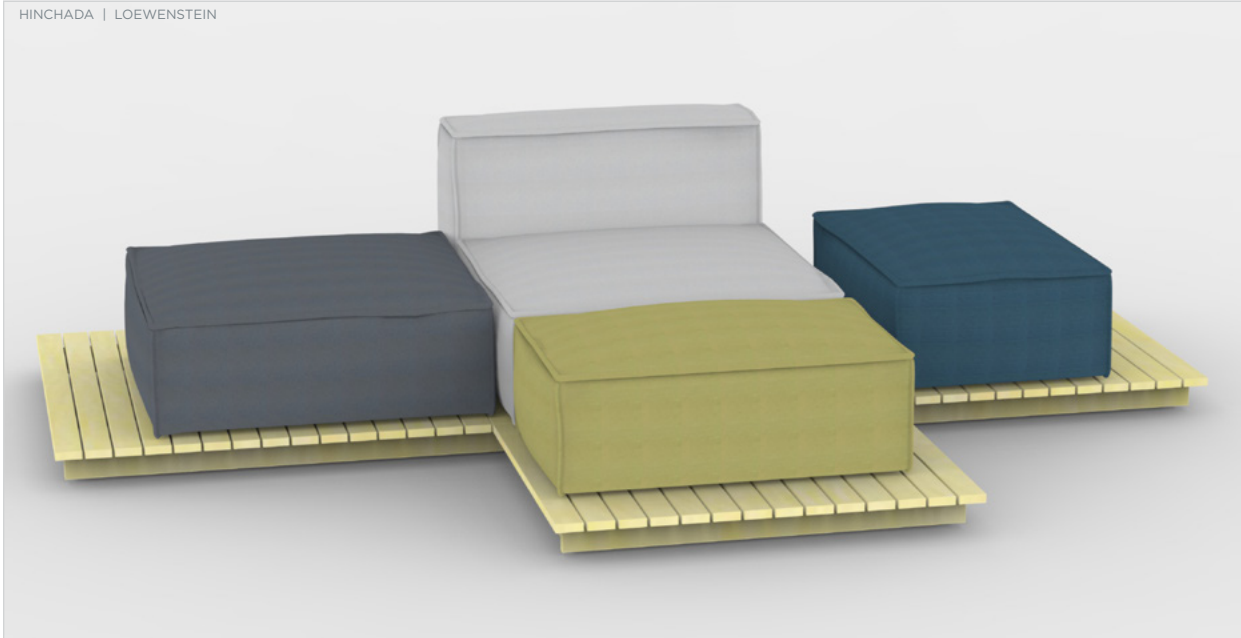
MODELS

- 5220-1 **LIST** ... 1,494 (Gr. 2) *Lounge (closed arm)*
- 5220-3 **LIST** ... 2,661 (Gr. 2) *Sofa (closed arm)*
- 5220WA-2 **LIST** ... 2,156 (Gr. 2) *Loveseat (open arm)*

FEATURES

- LEAN-OUT SPACE BETWEEN SEAT AND BACK
- UPHOLSTERED ARMS, SEAT AND BACK
- V STITCH ON INSIDE BACK
- EUROPEAN BEECH TAPERED LEGS
- ADJUSTABLE CHROME GLIDE
- EUROLUXE™ WITH SILVERBAN™ ON ALL EXPOSED WOOD SURFACES

TYPICALS



MODELS		FEATURES	
HN-4636C	LIST . . . 1,585 (Gr. 2)	HN-4646WP	LIST . . . 1,585
HN-3636C	LIST . . . 2,116 (Gr. 2)	HN-4636WP	LIST . . . 2,116
HN-2436C (2)	LIST . . . 2,490 (Gr. 2)	HN-3636WP	LIST . . . 2,490

- PLYWOOD SUBSTRUCTURE WITH WEBBED SEAT AREA
- 6" TOP CUSHION FOAM
- 2" CUSHION FOAM ON ALL SIDES
- 1" WIDE ACCENT WELT
- SCREW IN ADJUSTABLE GLIDES OR 4" BLACK LAMINATE PLINTH BASE MUST BE SPECIFIED



MODELS		FEATURES	
F49058	LIST . . . 461 (Gr. 2)	20" Round	
F49158	LIST . . . 542 (Gr. 2)	25" Round	

- FULLY UPHOLSTERED
- CONCEALED GLIDE (STANDARD)
- OPTIONAL CASTERS
- SPECIFY GRADE/FABRIC
- SPECIFY BASE OPTION (QZ) GLIDE (STANDARD) - NO UPCHARGE (HIS) CASTER - ADD \$96 LIST

TYPICALS



MODELS		FEATURES	
160371	LIST . . . 797 (Gr. 2)	• PRICED AND PACKED (1) OR (2) PER CARTON	• GRAY MOLDED BACK WITH BLACK MESH
160372 (2)	LIST . . . 1,379 (Gr. 2)	• STEEL POWDER COATED BASE FRAME	• GRAY MOLDED PLASTIC SEAT BOTTOM
161381	LIST . . . 721 (Gr. 2)	• MOLDED PLASTIC ARM	• UPHOLSTERED SEAT
161382 (2)	LIST . . . 1,233 (Gr. 2)	• OPTIONAL BLACK OR GRAY ARM	• SEAT HINGES UP FOR NESTING
162371	LIST . . . 679 (Gr. 2)		• STACKS 4 HIGH WITH SEAT HINGED DOWN
162372	LIST . . . 1,164 (Gr. 2)		• BLACK DUAL WHEEL PARTIAL HOODED CASTERS (SQ) STANDARD



MODELS	
32037	LIST . . . 1,043 (Gr. 2)

- FEATURES**
- HARDWOOD FRAME
 - UPHOLSTERED INSERT BACK
 - UPHOLSTERED INSERT SEAT
 - SEAT WEBBING



MODELS	
F67037	LIST . . . 792

- FEATURES**
- SOLID HARDWOOD FRAME
 - UPHOLSTERED BACK
 - UPHOLSTERED SEAT
 - OPEN ARMS
 - WALL-SAVER LEG



MODELS	
F37837XH	LIST . . . 805 (Gr. 2)

- FEATURES**
- HARDWOOD FRAME
 - SEAT WEBBING
 - UPHOLSTERED INSERT SEAT
 - SPECIFY FINISH
 - SPECIFY GRADE/FABRIC
 - SPECIFY BACK OPTION (XH) SOLID HARDWOOD BACK



MODELS	
23037	LIST . . . 875 (Gr. 2)

- FEATURES**
- SOLID HARDWOOD FRAME
 - UPHOLSTERED BACK
 - UPHOLSTERED SEAT
 - SEAT WEBBING

TYPICALS



MODELS

F47237 LIST 808 (Gr. 2)

FEATURES

- SOLID HARDWOOD FRAME
- OPEN, SLOPED, SQUARE ARMS
- UPHOLSTERED BACK
- UPHOLSTERED SEAT



MODELS

F17337 LIST 829

FEATURES

- SOLID HARDWOOD FRAME
- SEAT WEBBING
- OPEN ARMS
- UPHOLSTERED HALF BACK
- UPHOLSTERED SEAT
- STACKS 6 HIGH
- SPECIFY FINISH AND GRADE/FABRIC

TYPICALS



MODELS

30837 LIST719 (Gr. 2)

FEATURES

- HARDWOOD FRAME
- UPPER WOOD FRAME BACK OR UPHOLSTERED BACK
- UPHOLSTERED SEAT
- SEAT WEBBING



MODELS

1471 LIST1,083 (Gr. 2)

FEATURES

- 360° CLEAN OUT
- UPHOLSTERED SEAT AND BACK
- WARM GREY (WITH SILVER ION ANTIMICROBIAL) POWDER COAT ON ALL EXPOSED METAL IS STANDARD
- WALL-SAVER LEGS
- EUROLUXE WITH SILVERBAN ON ALL EXPOSED WOOD AS SPECIFIED
- ADJUSTABLE PLASTIC GLIDE



MODELS

F190381 (1) LIST276
F190384 (4) LIST755

FEATURES

- SILVER POWDERCOAT FRAME
- MOLDED PLASTIC SHELL
- COLOR OPTION
- PACKAGED (1) OR (4) PER CARTON



MODELS

30037 LIST751 (Gr. 2)

FEATURES

- HARDWOOD FRAME
- UPPER WOOD FRAME BACK OR UPHOLSTERED BACK
- UPHOLSTERED SEAT
- SEAT WEBBING



MODELS

F150371 LIST451 (Gr. 2)

FEATURES

- STEEL POWDER COATED FRAME
- POLYURETHANE ARM
- MOLDED PLYWOOD SEAT AND BACK
- UPHOLSTERED SEAT AND BACK
- STACKS 5 HIGH
- SPECIFY GRADE/FABRIC



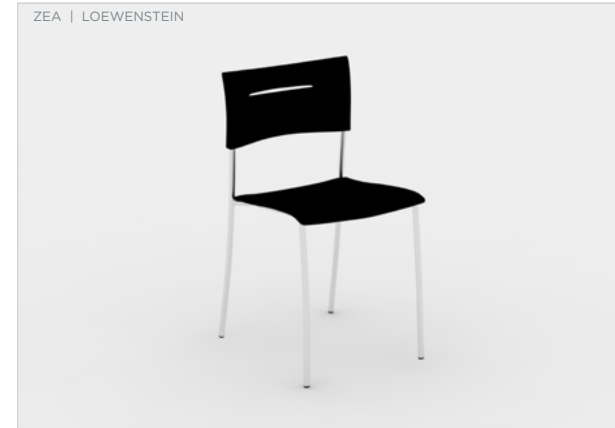
MODELS

1520 LIST984 (Gr. 2)

FEATURES

- CLEAN-OUT SPACE BETWEEN SEAT AND BACK
- UPHOLSTERED SEAT AND BACK
- EUROPEAN BEECH OPEN ARM FRAME
- EUROPEAN BEECH EXTERIOR FRAME
- WALL SAVER LEGS
- EUROLUXE WITH SILVERBAN ON ALL EXPOSED WOOD AS SPECIFIED
- ADJUSTABLE PLASTIC GLIDE

TYPICALS



MODELS
 1004381 **LIST** 462
 1004384 (4) **LIST** 1,360

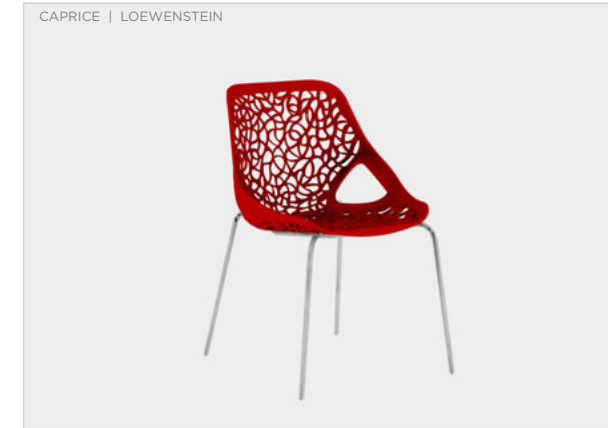
- FEATURES**
- POLISHED CHROME FRAME
 - POLYPROPYLENE BACK
 - UPHOLSTERED SEAT
 - STACKS 2 HIGH



MODELS
 7038 **LIST** 844 (Gr. 2)
 7039 **LIST** 980 (Gr. 2)

- FEATURES**
- EXPOSED WOOD LEGS AND SIDE STRETCHERS
 - EXPOSED WOOD FRAMED CLEAN OUT IN BACK
 - UPHOLSTERED SEAT AND BACK

TYPICALS



MODELS
 9701 **LIST** 508

- FEATURES**
- NYLON PLASTIC SHELL
 - POLISHED CHROME 4-LEG BASE FOR INDOOR USE
 - STAINLESS STEEL 4-LEG BASE FOR OUTDOOR USE
 - STACKS 5 HIGH



MODELS
 108015 **LIST** 936 (Gr. 2)
 108016 **LIST** 931 (Gr. 2)

- FEATURES**
- FULLY UPHOLSTERED
 - MOLDED PLYWOOD SEAT AND BACK
 - PNEUMATIC CONTROL
 - MUST SPECIFY BASE STYLE



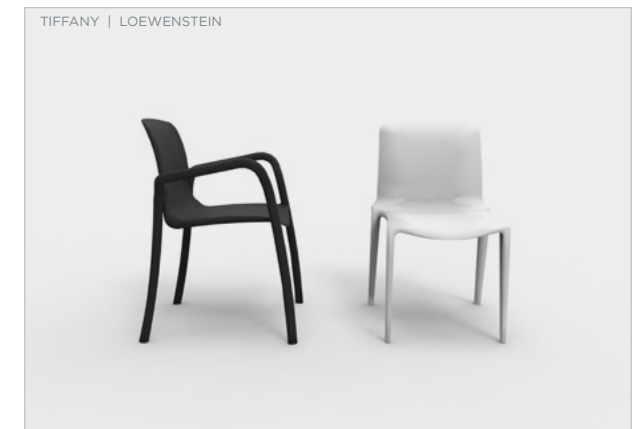
MODELS
 106137 **LIST** 1,040 106337 **LIST** 921
 106237 **LIST** 978 106437 **LIST** 1,204

- FEATURES**
- MOLDED POLYURETHANE SHELL
 - CHROME 4-PRONG SWIVEL BASE



MODELS
 107438-1 **LIST** 798
 107438-4 (4) **LIST** 2,977

- FEATURES**
- POLISHED CHROME FRAME
 - HAND WOVEN XILOPLAST CORD
 - STACKS 4 HIGH
 - PACKAGED 1 OR 4 PER CARTON



MODELS
 9544 **LIST** 485
 9551 **LIST** 434

- FEATURES**
- MOLDED NYLON PLASTIC FRAME
 - STACKS 6 HIGH
 - SUITABLE FOR INDOOR AND OUTDOOR USE

TYPICALS



MODELS

1471-E (END TABLE) LIST 747	1471-90 (CORNER 90° HANG TABLE) LIST 703
1471-OB (BASE BARIATRIC) LIST 1,340 (Gr. 2)	1471-C (BASE CHAIR) LIST 1,083 (Gr. 2)
1471-M (MIDDLE TABLE) LIST 574	1471-A (ADD ON CHAIR) LIST 964 (Gr. 2)
1471-2 (BASE LOVESEAT) LIST 1,851 (Gr. 2)	

FEATURES

- 360° CLEAN OUT
- UPHOLSTERED SEAT AND BACK
- EUROPEAN BEECH ARM CAPS
- ALL-SAVER LEGS
- ADJUSTABLE PLASTIC GLIDE
- WARM GREY (WITH SILVER ION ANTIMICROBIAL) POWDER COAT ON ALL EXPOSED METAL IS STANDARD
- EUROLUXE WITH SILVERBAN ON ALL EXPOSED WOOD AS SPECIFIED

TYPICALS



MODELS

1471-OB	LIST ... 1,340 (Gr. 2)
1471-K	LIST ... 1,340 (Gr. 2)

FEATURES

- 1471-OB RATED FOR 500 LBS.
- 1471-K RATED FOR 1000 LBS.
- 360° CLEAN OUT
- UPHOLSTERED SEAT AND BACK
- WALL-SAVER LEGS
- EUROPEAN BEECH ARM CAPS
- EUROLUXE WITH SILVERBAN ON ALL EXPOSED WOOD AS SPECIFIED
- ADJUSTABLE PLASTIC GLIDE
- WARM GREY (WITH SILVER ION ANTIMICROBIAL) POWDER COAT ON ALL EXPOSED METAL

VOYAGE | CAROLINA



MODELS

1520-E (END TABLE) LIST 504	1520-90 (CORNER 90° HANG TABLE) LIST 623
1520-C (BASE CHAIR) LIST 984 (Gr. 2)	1520-OB (BASE BARIATRIC) LIST 1,265 (Gr. 2)
1520-M (MIDDLE TABLE) LIST 351	1520-A (ADD ON CHAIR) LIST 854 (Gr. 2)
1520-2 (BASE LOVESEAT) LIST 1,495 (Gr. 2)	1520-OBA (ADD ON BARIATRIC) LIST 1,124 (Gr. 2)

FEATURES

- 1520-OB RATED FOR 500 LBS.
- CLEAN-OUT SPACE BETWEEN SEAT AND BACK
- UPHOLSTERED SEAT AND BACK
- EUROPEAN BEECH OPEN WOOD ARM FRAME
- EUROPEAN BEECH EXPOSED WOOD FRAME
- WALL SAVER LEGS
- EUROLUXE WITH SILVERBAN ON ALL EXPOSED WOOD SURFACES
- ADJUSTABLE PLASTIC GLIDE

VOYAGE | CAROLINA



MODELS

1520-OB	LIST ... 1,265 (Gr. 2)
1520-K	LIST ... 1,373 (Gr. 2)

FEATURES

- 1520-OB RATED FOR 500 LBS.
- 1520-K RATED FOR 1000 LBS.
- CLEAN-OUT SPACE BETWEEN SEAT AND BACK
- UPHOLSTERED SEAT AND BACK
- WALL SAVER LEGS
- EUROPEAN BEECH EXTERIOR FRAME
- EUROLUXE WITH SILVERBAN ON ALL EXPOSED WOOD SURFACES
- ADJUSTABLE PLASTIC GLIDE

TYPICALS

ORCHESTRA | CAROLINA



MODELS

- 1408-R **LIST** 3,312 (Gr. 2)
- 1487-R **LIST** 2,431 (Gr. 2)

FEATURES

- DURABLE STEEL RECLINER MECHANISM WITH AUTOMATIC LOCK-OUT WHEN RECLINED
- FOOTREST AND BACK OPERATE INDEPENDENTLY OF ONE ANOTHER
- BACK CAN BE INFINITELY POSITIONED TO ANY SLEEP POSITION ANGLE
- UPHOLSTERED ARMS, SEAT AND BACK
- TIGHT CUSHION
- WARM GREY (WITH SILVER ION ANTIMICROBIAL) POWDER COATED STEEL FOOT RELEASE LEVER
- WARM GREY (WITH SILVER ION ANTIMICROBIAL) POWDER COATED STEEL LOCK-OUT LEVER
- EUROPEAN BEECH FRONT LEGS *MUST SPECIFY FINISH
- BLACK CYLINDER BACK LEGS
- ADJUSTABLE BLACK PLASTIC SCREW-IN GLIDE
- EUROLUXE WITH SILVERBAN ON ALL EXPOSED WOOD AS SPECIFIED

VOYAGE | CAROLINA



MODELS

- 1577 **LIST** 2,522 (Gr. 2)
- 1577WA **LIST** 2,906 (Gr. 2)
- 1507TR **LIST** 3,302 (Gr. 2)
- 1507WA **LIST** 3,711 (Gr. 2)

FEATURES

- DURABLE STEEL RECLINER MECHANISM
- FOOTREST AND BACK OPERATE INDEPENDENTLY OF ONE ANOTHER
- BACK CAN BE INFINITELY POSITIONED TO ANY SLEEP POSITION ANGLE
- UPHOLSTERED ARM PANELS, SEAT AND BACK
- TIGHT CUSHION
- WARM GREY (WITH SILVER ION ANTIMICROBIAL) POWDER COATED STEEL FOOT RELEASE LEVER
- 5" FIXED CASTERS IN FRONT, 5" SWIVEL REAR CASTERS WITH BRAKE
- EUROLUXE WITH SILVERBAN ON ALL EXPOSED WOOD AS SPECIFIED

TYPICALS

AMICO | CAROLINA



MODELS

- 1659-S **LIST** .. 3,038 (Gr. 2)

FEATURES

- MULTI-POSITION STEEL FRAME MECHANISM
- UPHOLSTERED ARMS, SEAT AND BACK
- TIGHT CUSHIONS
- TWO LOCKING CASTERS ON BACK, TWO NON-LOCKING ON FRONT OF 1659-2SC
- EUROLUXE WITH SILVERBAN ON ALL EXPOSED WOOD AS SPECIFIED
- NON-SKID RUBBER GLIDES
- OPERATING STEPS
 - PULL HANDLE FORWARD EXTENDING THE SEAT AND EXTENDED SLEEP SURFACE CUSHIONS
 - PULL UPWARD ON THE HANDLE LIFTING THE EXTENDED SLEEP SURFACE CUSHION UNTIL IT LOCKS INTO PLACE
 - LOWER THE BACK CUSHION INTO THE SLEEP SURFACE

RETROSPECT | CAROLINA



MODELS

- 7058-S76 **LIST** .. 3,656 (Gr. 2)

FEATURES

- ARMLESS
- UPHOLSTERED SEAT AND BACK
- LOOSE FOLDING BACK CUSHION
- TIGHT SEAT CUSHION
- BEIGE ANTIMICROBIAL SLEEP SURFACE
- 2 UPHOLSTERED DRAWERS
- 3.5" MACHINE TURNED SATIN ALUMINUM LEGS
- ADJUSTABLE WHITE GLIDE COMES WITH STANDARD LEG
- EUROLUXE WITH SILVERBAN ON ALL EXPOSED WOOD AS SPECIFIED
- OPERATING STEPS
 - BACK FOLDS DOWN AND OUT TO EXPOSE SLEEP SURFACE

TYPICALS

SILVR ION METAL | CAROLINA



MODELS

1477

LIST ... 1,255 (Gr. 2)

FEATURES

- 360° CLEAN OUT
- UPHOLSTERED SEAT AND BACK
- EUROPEAN BEECH ARM CAPS
- WALL-SAVER LEGS
- ADJUSTABLE PLASTIC GLIDE
- EUROLUXE WITH SILVERBAN ON ALL EXPOSED WOOD AS SPECIFIED
- WARM GREY (WITH SILVER ION ANTIMICROBIAL) POWDER COAT ON ALL EXPOSED METAL IS STANDARD

VOYAGE | CAROLINA



MODELS

1525 LIST ... 1,134 (Gr. 2)
1525 - MOTION LIST ... 1,615 (Gr. 2)

FEATURES

- 525-MOTION MECHANISM DESIGN SPECIFIC WITH UP TO 8° OF SMOOTH TRAVEL
- CLEAN-OUT SPACE BETWEEN SEAT AND BACK
- UPHOLSTERED SEAT AND BACK
- EUROPEAN BEECH OPEN ARM FRAME
- EUROPEAN BEECH EXTERIOR FRAME
- EUROLUXE WITH SILVERBAN ON ALL EXPOSED WOOD SURFACES
- ADJUSTABLE PLASTIC GLIDE

TYPICALS

BLUES | LOEWENSTEIN



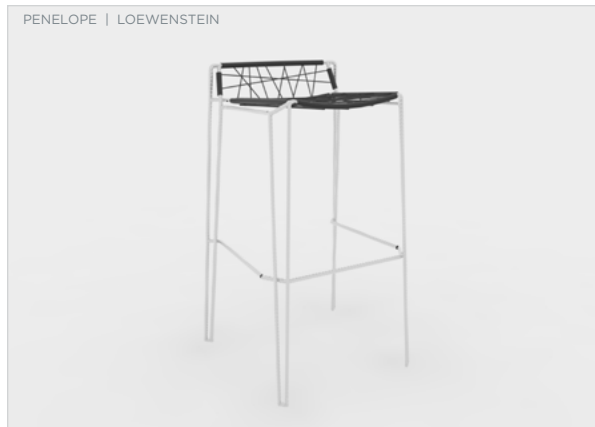
MODELS

7040B LIST ... 992 (Gr. 2)

FEATURES

- EXPOSED WOOD LEGS AND STRETCHERS
- EXPOSED WOOD FRAMED CLEAN OUT IN BACK
- UPHOLSTERED SEAT AND BACK
- BRUSHED STAINLESS METAL FOOTGUARD

PENELOPE | LOEWENSTEIN



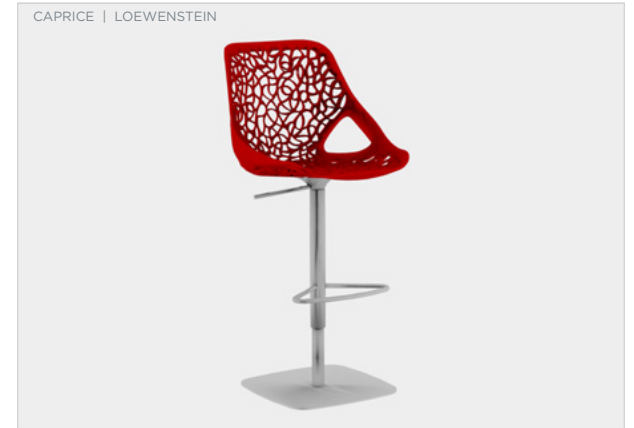
MODELS

107458-1 LIST ... 889
107458-2 (2) LIST ... 1,674

FEATURES

- POLISHED CHROME FRAME
- HAND WOVEN XILOPLAST CORD
- STACKS 2 HIGH
- PACKAGED 1 OR 2 PER CARTON

CAPRICE | LOEWENSTEIN



MODELS

9707 LIST ... 1,043

FEATURES

- NYLON PLASTIC SHELL
- POLISHED CHROME HEIGHT ADJUSTABLE COLUMN BASE
- POLISHED CHROME FOOT RING

ZEVA | LOEWENSTEIN



MODELS

1004381B LIST ... 625
1004382B (2) LIST ... 968

FEATURES

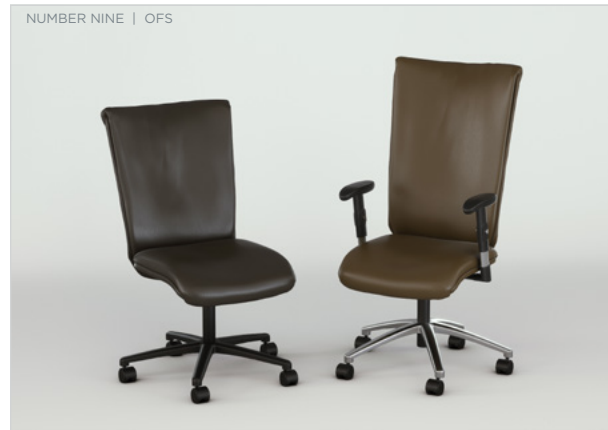
- POLISHED CHROME FRAME
- POLYPROPYLENE BACK
- UPHOLSTERED SEAT
- STACKS 2 HIGH
- PACKAGED 1 OR 2 PER CARTON

TYPICALS



MODELS
 16015 LIST951 (Gr. 2) 16016 LIST961 (Gr. 2)

- FEATURES**
- MOLDED PLASTIC FRAME
 - MESH BACK
 - MOLDED MECHANISM TO MATCH FRAME
 - MOLDED PLASTIC SEAT BOTTOM
 - PNEUMATIC HEIGHT ADJUSTABLE WITH SEAT SLIDER AND TILT LOCK
 - HIGH PROFILE BLACK POLYURETHANE BASE
 - BLACK DUAL WHEEL PARTIAL HOODED CASTERS (SQ) STANDARD
 - OPTIONAL BLACK, GREY OR WHITE FRAME
 - OPTIONAL BLACK OR GREY MESH BACK
 - OPTIONAL HIGH PROFILE BASE IN POLISHED ALUMINUM OR WHITE POWDERCOAT
 - OPTIONAL BLACK SOFTWHEEL CASTERS
 - OPTIONAL WHITE SOFTWHEEL CASTERS WITH BLACK TREAD



MODELS
 61116 LIST945 (Gr. 4) 61117 LIST1,212 (Gr. 4)

- FEATURES**
- ARMLESS (TV) STANDARD
 - MOLDED CURVED PLYWOOD SEAT AND BACK
 - MULTI-LAYERED SEAT FOAM
 - PNEUMATIC KNEE TILT CONTROL (SZ) STANDARD
 - 5-PRONG BLACK POLYURETHANE BASE (SA) STANDARD
 - BLACK DUAL WHEEL PARTIAL HOODED CASTERS (SQ) STANDARD
 - OPTIONAL LOOP ARM, ADJUSTABLE ARM, TWISTED ARM WITH HARDWOOD ARM CAPS, TWISTED ARM WITH BIRDSEYE MAPLE ARM CAPS, OR TWISTED ARM WITH UPHOLSTERED ARM CAPS
 - OPTIONAL SYNCHRONOUS CONTROL/OPTIONAL RATCHET BACK
 - OPTIONAL WOOD OR TWISTED ALUMINUM BASE
 - OPTIONAL HARDWOOD FLOOR CASTERS
 - OPTIONAL PLASTIC EDGE GUARD



MODELS
 77016 LIST1,438 (Gr. 2) 77017 LIST1,478 (Gr. 2)

- FEATURES**
- HIGH BACK WITH HEADREST
 - MOLDED POLYURETHANE SEAT
 - POLISHED ALUMINUM ARMS
 - UPHOLSTERED ARM CAPS
 - PNEUMATIC SYNCHRONOUS CONTROL WITH SEAT SLIDER
 - 5-PRONG POLISHED ALUMINUM BASE
 - BLACK DUAL WHEEL PARTIAL HOODED CASTERS (SQ) STANDARD
 - OPTIONAL CASTERS



MODELS
 F12117 LIST797

- FEATURES**
- SOFT FAUX LEATHER
 - PNEUMATIC LIFT
 - SYNCHRONOUS MECHANISM
 - 5-PRONG POLISHED ALUMINUM BASE
 - BLACK DUAL WHEEL HOODED CASTERS
 - CHROME ARMS
 - UPHOLSTERED ARM SLEEVE

TYPICALS



MODELS
 F74016 LIST888 (Gr. 2)

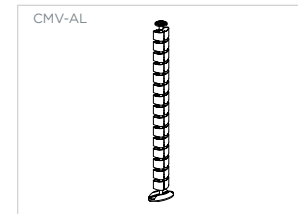
- FEATURES**
- MID BACK
 - MOLDED POLYURETHANE SEAT
 - BLACK MOLDED BACK WITH BLACK MESH (FIE) STANDARD
 - ARMLESS (TV) STANDARD
 - PNEUMATIC SYNCHRONOUS CONTROL WITH SEAT SLIDER
 - 5-PRONG BLACK POLYURETHANE HIGH ARCH BASE (TT) STANDARD
 - BLACK DUAL WHEEL PARTIAL HOODED CASTERS (SQ) STANDARD
 - OPTIONAL ADJUSTABLE 'T' ARMS
 - OPTIONAL CASTER



MODELS
 F43041 (WITH TABLE) LIST1,549 (Gr. 2)

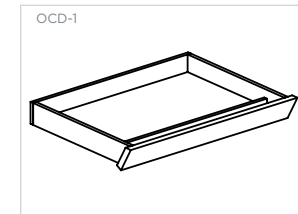
- FEATURES**
- FULLY UPHOLSTERED
 - CONCEALED GLIDE
 - BLACK OVAL NON-HANDED TABLET
 - SINUOUS SPRINGS IN SEAT

CABLE MANAGERS

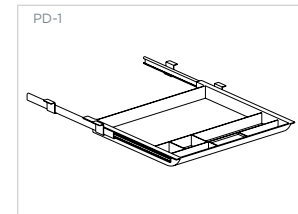


- 15 rings
 - 1 head
 - 1 edge clip
 - 1 clamp
 - 2 screws
- LIST** 100

PENCIL DRAWERS

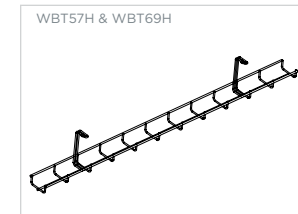


- Center drawer with pencil tray
 - 25.25" wide with bracket tabs
 - Specify finish
- LIST** 350



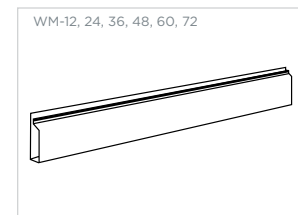
- Black molded plastic
 - Field installed
 - Flush mount only
- LIST** 115

WIRE BASKETS

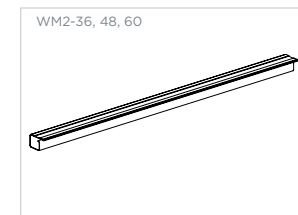


- Wire basket manager
 - Channel for heavy cabling
 - Silver powdercoat finish
- WBT57H LIST** 94
WBT69H LIST 115

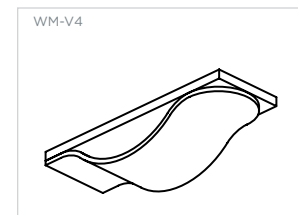
WIRE MANAGERS



- Black Plastic Wire Manager
- WM-12 LIST** 39
WM-24 LIST 48
WM-36 LIST 57
WM-48 LIST 63
WM-60 LIST 69
WM-72 LIST 78

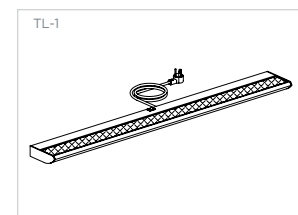


- Larger Plastic Wire Manager to use with Staks
- WM2-36 LIST** 33
WM2-48 LIST 38
WM2-60 LIST 53

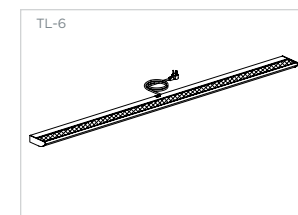


- Black Velcro™ wire management strip
- LIST** 30

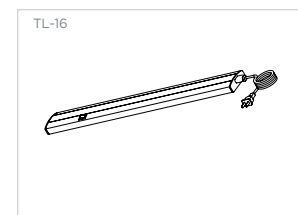
TASK LIGHTS



- Energy efficient T5 3500k fluorescent lamp
 - Normal Power Factor (NPF) electronic ballast
 - 9' black southwest rotation cord with 90° plug
 - Center cord exit
 - On/off switch in center of fixture
 - Prismatic lens
 - UV stable silver reflector
 - Screw mounting
 - UL, CUL, listed
- WM-72 LIST** 259

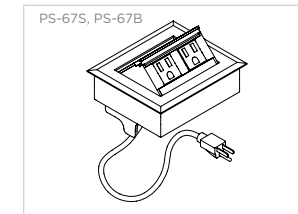


- Energy efficient T5 3500k fluorescent lamp
 - Normal Power Factor (NPF) electronic ballast
 - 9' black southwest rotation cord with 90° plug
 - Center cord exit
 - On/off switch in center of fixture
 - Prismatic lens
 - UV stable silver reflector
 - Screw mounting
- LIST** 441

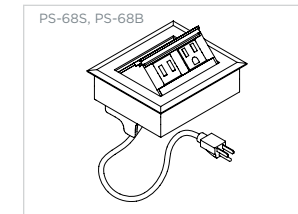


- Energy efficient LED 5200K bulbs
 - Frosted diffuser
 - Silver frame
 - 10' power cord
 - Aluminum construction
 - Screw mounting
 - UL listed
- LIST** 384

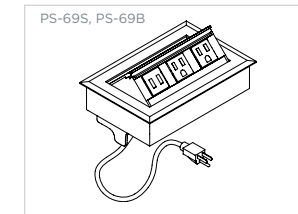
POWER SUPPLIES



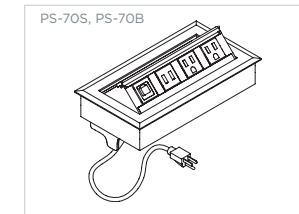
- Anodized silver/black aluminum finish
 - (2) 10 amp outlet
 - (1) charging USB port
 - 6' cord
 - UL listed
- LIST** 225



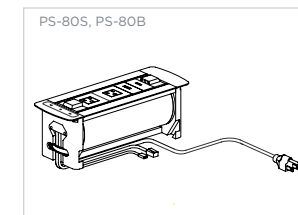
- Anodized silver/black aluminum finish
 - (1) 10 amp outlet
 - (1) charging USB port
 - 6' cord
 - UL listed
- LIST** 221



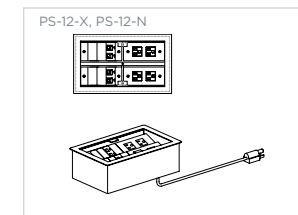
- Anodized silver/black aluminum finish
 - (2) 10 amp outlet
 - (1) Charging USB port
 - 6' cord
 - UL listed
- LIST** 396



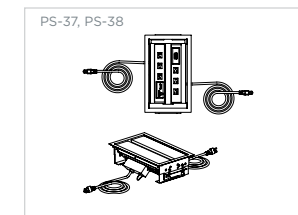
- Anodized silver/black aluminum finish
 - (2) 10 amp outlet
 - (1) Charging USB port
 - (1) Open data port
 - 6' Cord
 - UL listed
- LIST** 453



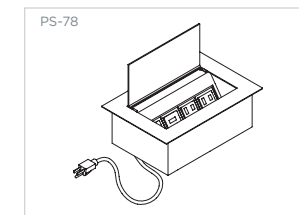
- One touch open and close
 - Safety photo electronic eye prevents rotation when unit is being used
 - Silver anodized aluminum finish
 - (2) 15 amp power outlets
 - (1) HDMI port
 - (1) powered USB charging port
 - 12' cord
 - UL listed
- LIST** 1,084



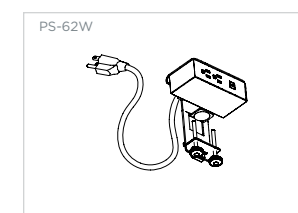
- Standard four 110 volt outlets
 - 4 Cat 5e data jacks (2 modules)
 - 4 blank insert modules
 - Dual covers meet in center, slide down out of the way
 - Fits into 10.4375" x 6.1875" slot
 - 9' cord
 - Flush mount
- PS-12-X LIST** 1,012
PS-12-N LIST 1,550



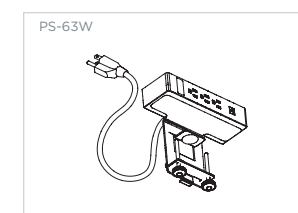
- 6 power outlets
 - 2 RJ45 data connectors
 - 1 HDMI
 - 1 VGA
 - 1 mini stereo UL listed
- LIST** 1,869



- Anodized aluminum finish
 - Hinged lid with cord management when closed
 - Pass through wire management area
 - (2) 15 amp power outlets
 - (1) 2 port powered USB charger
 - (1) open data port
 - 6' cord
 - UL listed
- LIST** 486



- White power supply
 - Clamps to rim of worksurface
 - (2) 15 amp outlets
 - (2) 2.1 amp USB charging port
 - 6' cord
 - UL listed
- LIST** 296



- White power supply
 - Clamps to rim of worksurface
 - (3) 15 amp outlets
 - (2) 2.1 amp USB charging port
 - (1) open data port
 - 6' cord
 - UL listed
- LIST** 363

